

Canadian Technical Report of Fisheries and Aquatic Sciences #3658

– Figure 6

Terms of Use

As a courtesy to fellow scientists, please e-mail Dr. Catherine Johnson (Catherine.Johnson@dfo-mpo.gc.ca) to indicate how you are using these data so that efforts are not duplicated. Comments and suggestions are also welcome.

The data provided here can be redistributed and/or modified under the terms of the Government of Canada Open Data License Agreement as published on <http://open.canada.ca/en/open-government-licence-canada> in its current version, or any subsequent version.

The data are licensed “as is”. Fisheries and Oceans Canada makes no representation and gives no warranty whatsoever with respect to the data and expressly disclaims any implied warranty of merchantability or fitness for a particular purpose of the data. Fisheries and Oceans Canada assumes no obligation or liability whatsoever for the provision of updates to the Data. See the Government of Canada Open Data License Agreement at <http://open.canada.ca/en/open-government-licence-canada> for details.

Citation

Users of the data contained herein are asked to cite the associated Canadian Technical Report of Fisheries and Aquatic Sciences as follows:

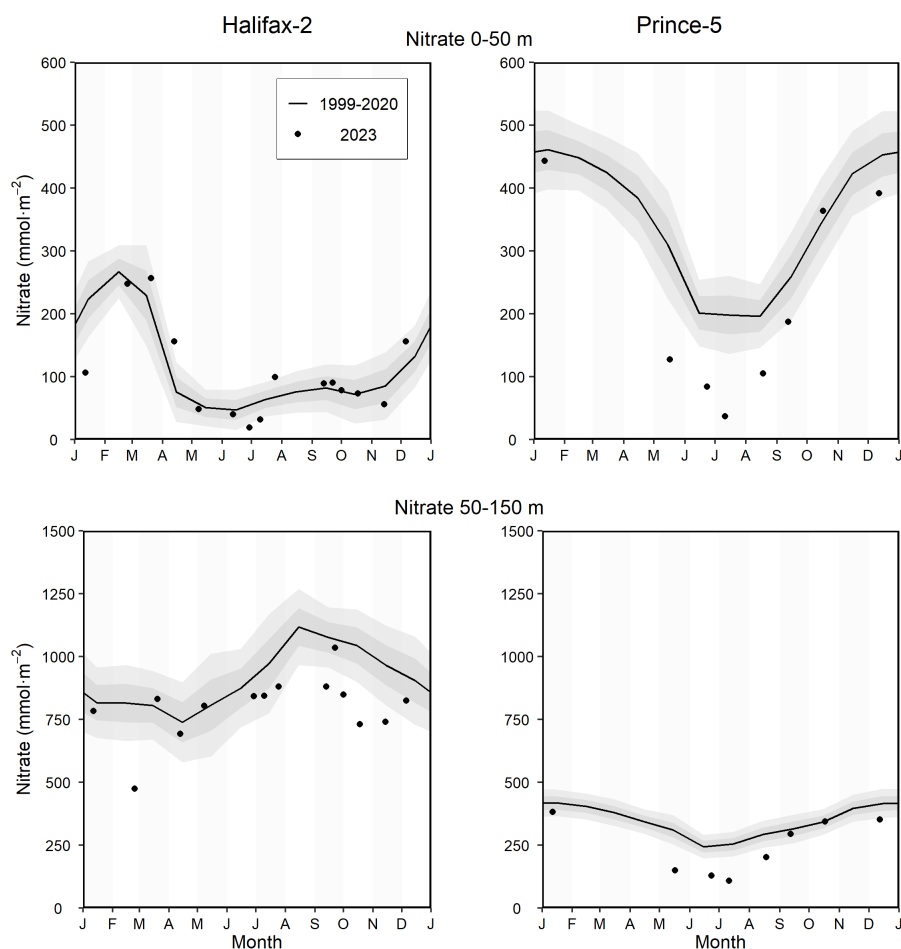
Casault, B., Johnson, C., Devred, E., and Beazley, L. 2025. Chemical and Biological Oceanographic Conditions on the Scotian Shelf and in the Eastern Gulf of Maine during 2023. Can. Tech. Rep. Fish. Aquat. Sci. 3658 : vi + 57 p.

Contact

For questions concerning the data provided, please contact:

Dr. Catherine Johnson
Fisheries and Oceans Canada
Bedford Institute of Oceanography
P.O. Box 1006, 1 Challenger Dr.
Dartmouth, N.S. Canada B2Y 4A2
Tel: 902-426-0753
Email: Catherine.Johnson@dfo-mpo.gc.ca

Figure



Nitrate inventories at the Maritimes high-frequency sampling stations. Top panels: Surface (0–50 m) nitrate inventory. Bottom panels: Deep (50–150 m for Halifax-2 and 50–95 m for Prince-5) nitrate inventory. The solid circles represent the 2023 data; the solid line represents the monthly climatological means for the reference period 1999-2020; the gray shaded ribbons represent the standard deviation (± 0.5 and ± 1 sd) of the monthly means. Tick marks on the horizontal axes indicate the 1st day of the month.

Data

Time series

The integrated nitrate concentration data used to plot Figure 6 are available in the files *Integrated_Nitrate_Stations_HL2_Timeseries.csv* for Halifax-2 and *Integrated_Nitrate_Stations_P5_Timeseries.csv* for Prince-5 fixed stations.

Climatology

The integrated nitrate concentration climatology data used to plot Figure 6 are available in the files *Integrated_Nitrate_Stations_HL2_Climatology.csv* for Halifax-2 and *Integrated_Nitrate_Stations_P5_Climatology.csv* for Prince-5 fixed stations.