

Canadian Technical Report of Fisheries and Aquatic Sciences

#3744 – Figure 18

Terms of Use

As a courtesy to fellow scientists, please e-mail Dr. Catherine Johnson (Catherine.Johnson@dfo-mpo.gc.ca) to indicate how you are using these data so that efforts are not duplicated. Comments and suggestions are also welcome.

The data provided here can be redistributed and/or modified under the terms of the Government of Canada Open Data License Agreement as published on <http://open.canada.ca/en/open-government-licence-canada> in its current version, or any subsequent version.

The data are licensed “as is”. Fisheries and Oceans Canada makes no representation and gives no warranty whatsoever with respect to the data and expressly disclaims any implied warranty of merchantability or fitness for a particular purpose of the data. Fisheries and Oceans Canada assumes no obligation or liability whatsoever for the provision of updates to the Data. See the Government of Canada Open Data License Agreement at <http://open.canada.ca/en/open-government-licence-canada> for details.

Citation

Users of the data contained herein are asked to cite the associated Canadian Technical Report of Fisheries and Aquatic Sciences as follows:

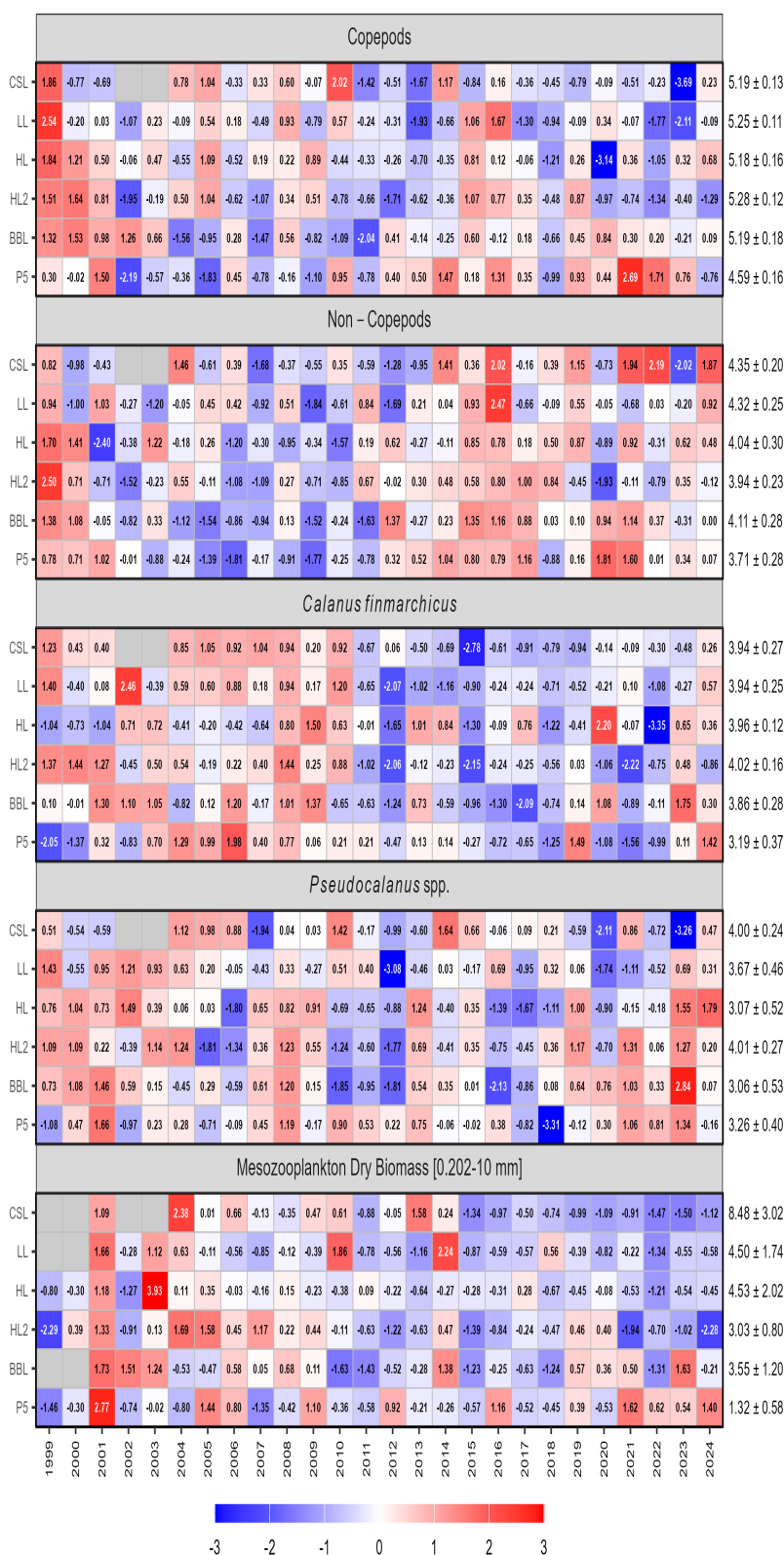
Casault, B., Johnson, C., Devred, E., Clay, S., and Beazley, L. 2025. Chemical and Biological Oceanographic Conditions on the Scotian Shelf and in the Eastern Gulf of Maine during 2024. Can. Tech. Rep. Fish. Aquat. Sci. 3744: vi + 58 p. <https://doi.org/10.60825/p6ad-1k52>

Contact

For questions concerning the data provided, please contact:

Dr. Catherine Johnson
Fisheries and Oceans Canada
Bedford Institute of Oceanography
P.O. Box 1006, 1 Challenger Dr.
Dartmouth, N.S. Canada B2Y 4A2
Tel: 902-426-0753
Email: Catherine.Johnson@dfo-mpo.gc.ca

Figure



Annual anomaly scorecards for zooplankton abundance and biomass. Values in each cell are anomalies from the mean for the reference period 1999–2020, in standard deviation (sd) units (mean and sd listed at right in units of $\log_{10}(\text{individuals} \cdot \text{m}^{-2} + 1)$ for abundance and $\text{g} \cdot \text{m}^{-2}$ for biomass). Red (blue) cells indicate higher- (lower-) than-normal abundances or biomass, with shading intensity reflecting the magnitude of the anomaly. Gray cells indicate missing data. CSL: Cabot Strait section; LL: Louisbourg section; HL: Halifax section; HL2: Halifax-2; BBL: Browns Bank section; P5: Prince-5.

Data

Annual means time series

The zooplankton abundance/biomass annual means data used to plot Figure 18 are available in the file *Scorecard_Zooplankton_Annual_Means.csv*.

Climatology

The zooplankton abundance/biomass annual climatology data used to plot Figure 18 are available in the file *Scorecard_Zooplankton_Annual_Climatology.csv*.

Annual anomalies time series

The zooplankton abundance/biomass annual anomalies data used to plot Figure 18 are available in the file *Scorecard_Zooplankton_Annual_Anomalies.csv*.